

Coosai Automation Co.

G系列气动执行器

G SERIES PNEUMATIC ACTUATOR



COOSAI AUTOMATION CO.

Add: Dongou Industrial Zone, Oubei, Yongjia, Wenzhou, Zhejiang, China 325105.

Tel: +86 577 67988858 Fax: +86 577 57776668

Email: sales@coosai.com

Web: www.coosai.com www.coosai.com

目录CONTENTS

product description

parameters and characteristics, model establishment	01
Unique design	02
Modular multi-function	03
Material figure	04
Control the attachment installation diagram	05

Pneumatic actuators

Pneumatic actuators basic graphics	06
Pneumatic actuator performance data	07
Pneumatic actuator output torque	08
BG series actuators/pneumatic actuator size shape	09
BG series actuators/pneumatic actuator size shape	10
BG series actuators/pneumatic actuator installation instructions and data	11
BG series actuators/pneumatic actuator installation instructions and data	12



企业简介BRIEF INTRODUCTION

Coosai Automation Co belongs to Coosai Valve Group. It is specialized in researching, developing and manufacturing all kinds of pneumatic hydraulic actuators and pneumatic valves, hydraulic valves, science and technology enterprises, widely Used in natural gas, oil, chemical industry, metal smelting, paper making, printing, electric power, mining, pharmaceutical, daily chemical, food and beverage, water treatment and air treatment And mechanical equipment and other industries, the company from its inception, insisting on the tenet of science and technology innovation, quality first, set up over the years acclaimed, is flow control engineering and automation Equipment modification of the preferred products.

Coosai's products include: the AT, GT, AW, BG series quarter-turn actuators, straight travel pneumatic actuator, hydraulic actuator, pneumatic hydraulic ball valve, pneumatic hydraulic Butterfly valve, pneumatic control valve, pneumatic valve, pneumatic valve, pneumatic plug valve and pneumatic hydraulic valve products. Brocade using high precision special machine tool processing, make the product no Only the variety qi, the specification, but is beautiful, stable performance, torque, etc. Aluminum alloy extrusion cylinder tube, the surface hardness of oxidation treatment, the Hardness of oxide film, have reached the level of similar foreign sports always have wear-resisting material support, greatly improving the service life. Documents are to be used in computer networking, brocade products Alone or centralized control, analog or digital variables can apply two kinds of signal control. Company consulting, design, modelling, installation for the user, to solve all kinds of control scheme.

Our goal: to create first-class brand "brocade", at preferential prices, excellent after-sales service warmly welcome customers at home and abroad to contact business, build Establish long term relationship, technical resources sharing brocade pneumatic valve, expansion valve market at home and abroad together.



BG - series actuators

Working Parameter

- Rotary Angle: 0° to 90°
- Output torque:
Dual role of 1500-100000 - nm inlb (15000-15000)
Spring return in 600-200000 - nm inlb (5500-5500)
- Pressure of work:
Pneumatic 3-10 bar (40-145 PSIG)
Hydraulic 100 bar (maximum) (100 PSIG)
- Working temperature:
Standard ST - 20°C to + 80°C (NBR)
High temperature HT - 15 °C to + 150 °C (fluorine rubber)
LT. 40°C to + 80°C, low temperature (silicone rubber)
- Modular design.
G series perform appliance for the pneumatic power, hydraulic power, spring Power, manual control function module, etc. All function modules to each other Combination and mutual change, the user can according to the process control of the process of the valve Choose various modules function needed. Modules can also buy alone, To reduce the spare parts inventory.
- Security:
G series pre-installed spring modules, using the latest manufacturing technology, Will spring pre-loaded with spring modules, eliminates accidental release Stretch, lifted a potential danger to prevent mistake operation, convenient disassembly Unloading and installation.
- Compact:
G series actuators integrated optimization of the center of gravity position, product appearance appear It is more reasonable and lighter. Comparing to other same quality to torque of the actuator Much lighter, and need less space for installation.
- Waterproof protection:
Comply with IP66 and IP67 protection standards, all the components of joint distribution O-rings, can effectively prevent water from entering the internal excess distribution, subjected to short Time or long-term immersion, the user need to undertake choosing according to the occasion.
- Wear and lubrication:
Sliding friction parts of the piston rod and the piston have self-lubricating bearings, The surface of the piston rod after fine grinding and polishing, hard chromium electroplating cylinder taboo in the coating Teflon coating or polishing hard chromium plating process, excellent lubricity Can, try to make the output energy directly to the valve, reduce the friction Force, effectively strengthen the use efficiency of spring.
- Corrosion resistance:
Internal protection and external coating G series actuators. Reliability is applied to All kinds of environment, comply with the relevant national standards.
- Standardization:
All the G - a series of models at the top of the drive shaft interface size all phase With NAMUR standard, ease of installation position switch, locator Fold the standard installation methods.
- The valve installation:
G - series actuators and valves installed, flange and shaft key links, size With ISO5211 standard specified torque range.

Model Preparation

BTS G0 180SR ST MHP

- Manual operation modules: screw handwheel HPM
SM/hydraulic manual pump
- Working temperature: Standard ST - 20°C to + 80°C
High temperature HT - 15°C to + 150°C
LT to 40°C to + 80°C at low temperature
- DA = double function module D1 = single-cylinder D2 = duplex
- Action: SR2 = single function module SR1 / SR2 / SR3 / SR4
- Pneumatic cylinder
- Transmission module number: G0 - the G8
- G series code



Unique and outstanding design

1. The piston guide ring: adopt containing ptfE Ene, pneumatic special carbon fiber material composition and so on Fluorocarbon guide ring and the cylinder and piston movement Isolation effect, avoid scratches, has the good Lubrication, wear resistance and prolong the service life.
2. The piston rod self-lubricating bearings, lubrication, guiding role, reduce the mount Clean force, increase the transmission performance, valid as far as possible the energy transmitted to the drive shaft, To strengthen the service efficiency of spring.
3. The drive shaft self-lubricating bearings: equipped with upper and lower two self-lubricating bearings, with Bearing positioning, rotating lubrication, can eliminate from lateral force, reduced Light friction, can apply for a long time in the operation condition of the oil free.
4. Cylinder block bore teflon coating: adopts high-tech new containing PTFE material Type of coating, after special craft processing, high temperature drying, hu adhesion Strong, corrosion resistance, good lubricating property, greatly improve the efficiency.
5. Fork of roll sleeve structure: use bearing steel roll up and down two sets of holds pull Fork, rolling set of sliding back and forth inside the tank, to convert straight travel to quarter-turn lose Out, innovative design, simple structure, novel.
6. Lock nut: with special lock nut to prevent spring vibration Loose or fall off.
7. The spring modules: preinstalled type spring modules, eliminates the accidental release of the play Force, lifted a potential danger to prevent mistake operation, the module for innovation Design, safety, convenient disassembly and installation.
8. Manual control hydraulic cylinder: using the space of spring, cleverly concealed, narrow feet ", innovative design.
9. Stroke adjusting screw: G - series actuator provides a + 5° for trip Section, in the 80° to 100° between stroke can be adjusted freely.
10. Standard accessories connection: the G series interface model is the output of the drive shaft accessories All the same, in accordance with NAMUR standard. All in accordance with NAMUR standard Annex can install fast, easy connection.
11. The standard valve connection: G - install valve series interface connection size, All with ISO5211 standard specified torque range.
12. Guide slide block device: model in The G5 above all equipped with, in order to guide rod as Support, slider sliding when driving fork Dynamic output shaft, work smoothly, this design The main effective shrink to the size and weight.
13. The exhaust monitor: due to the transmission Module is sealed, so a special design With exhaust monitor, check the pneumatic module Overpressure venting and seal leakage, but also In order to prevent the dust, corrosive atmosphere and water To enter.

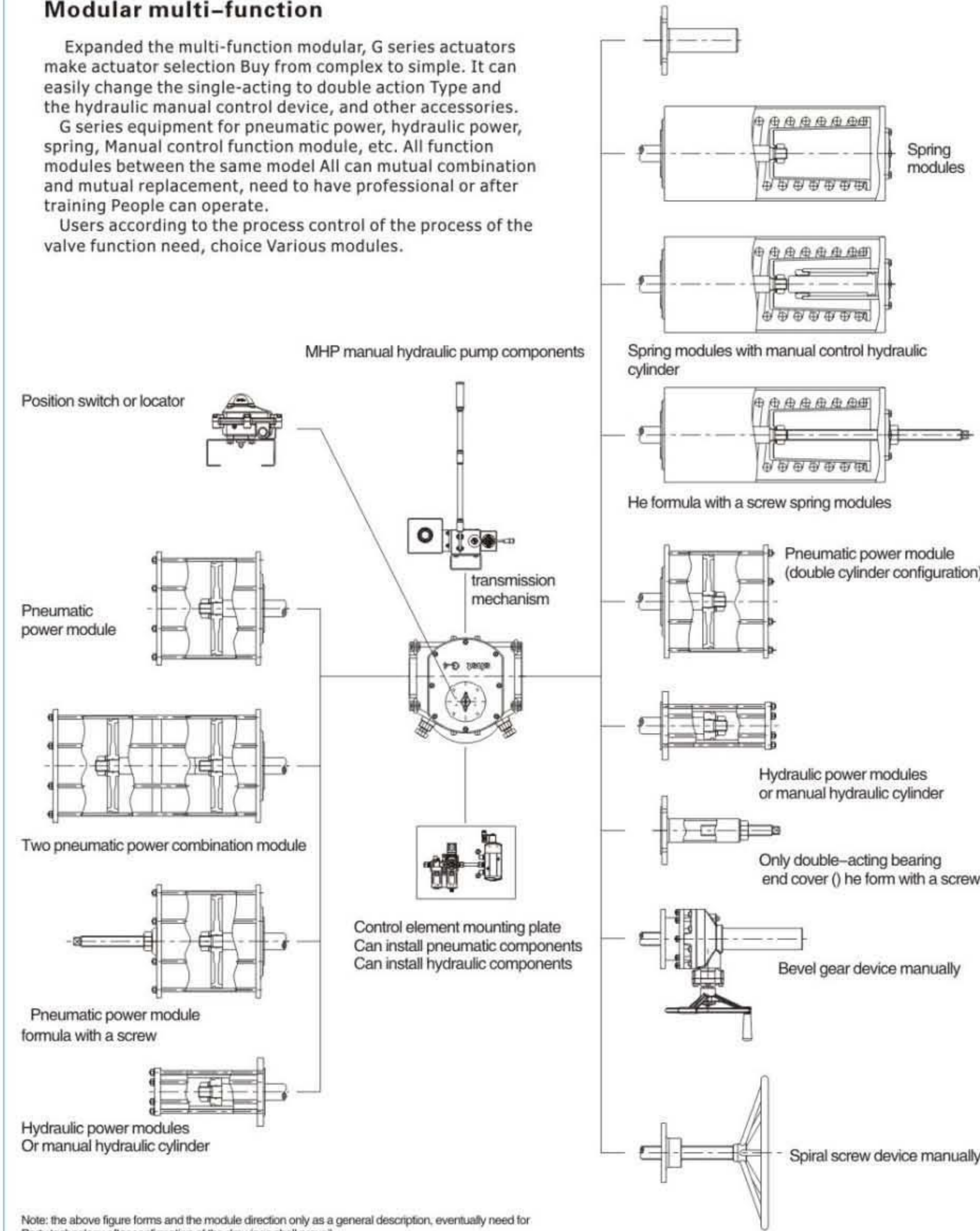


Modular multi-function

Expanded the multi-function modular, G series actuators make actuator selection Buy from complex to simple. It can easily change the single-acting to double action Type and the hydraulic manual control device, and other accessories.

G series equipment for pneumatic power, hydraulic power, spring, Manual control function module, etc. All function modules between the same model All can mutual combination and mutual replacement, need to have professional or after training People can operate.

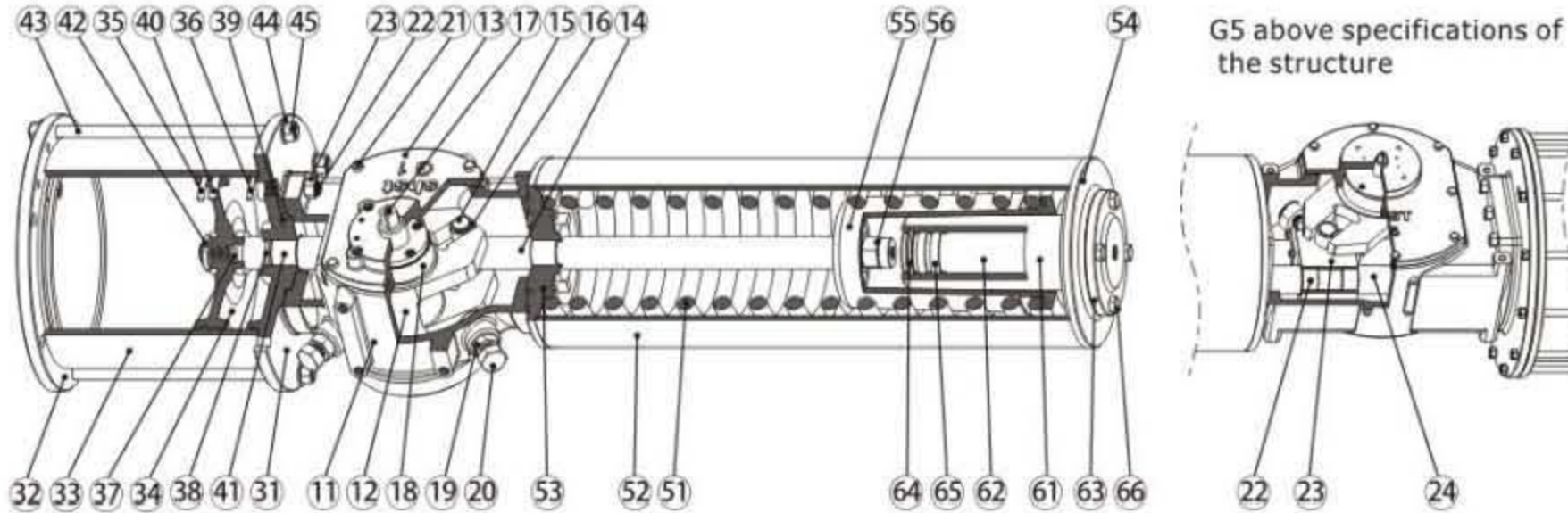
Users according to the process control of the process of the valve function need, choice Various modules.



Note: the above figure forms and the module direction only as a general description, eventually need for Party technology after confirmation of the drawings shall prevail.



Material Map



Note: above for single acting type, customer technical department if you have any questions please relate this company

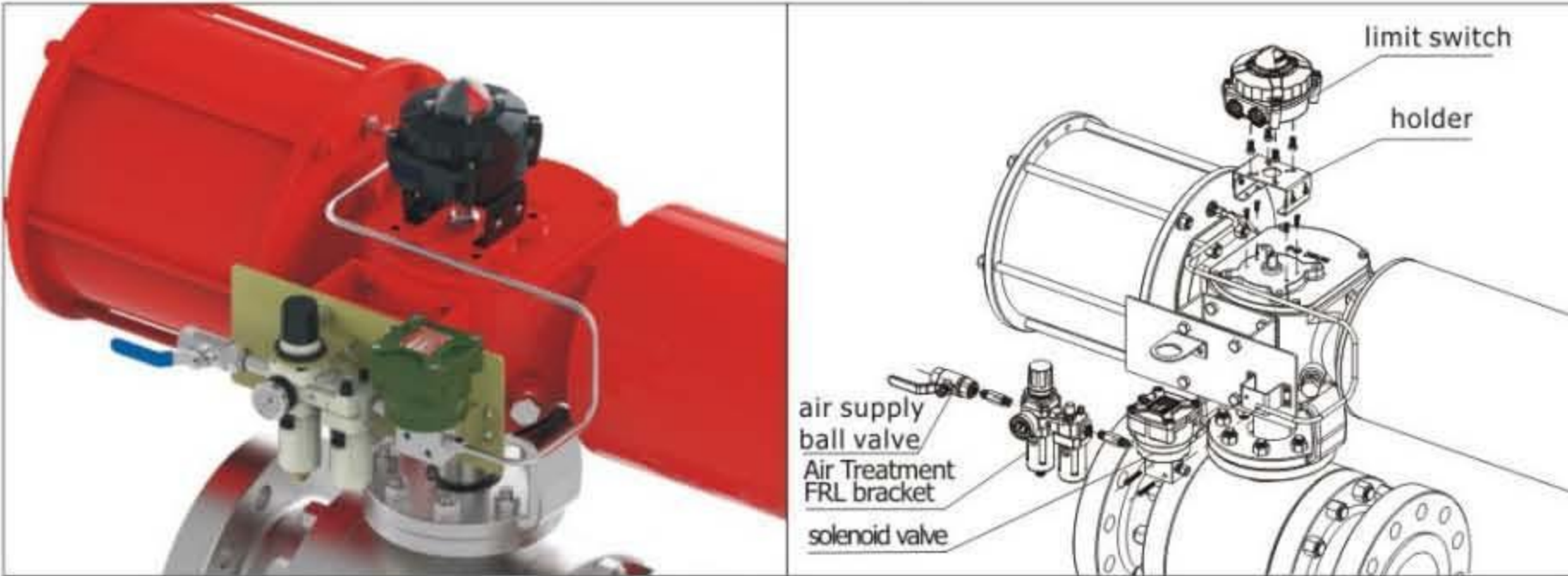
No.	Parts	Material	No.	Parts	Material
11	Shell	Nodular Cast Iron	37	O-ring	Rubber
12	Fork	Cast Iron	38	O-ring	Rubber
13	Cover	Carbon Steel	39	O-ring	Rubber
14	The Piston Rod	Bearing Steel	40	Guide Ring	Composite Materials
15	Pin	Bearing Steel	41	The Lubrication Of Bearings	Composite Materials
16	Roll Sleeve	Carbon Steel (chrome Plating)	42	Lock Nut	Carbon Steel
17	The Output Shaft	Composite Materials	43	Stud	Carbon Steel
18	The Lubrication Of Bearings	Carbon Steel	44	Gasket	Carbon Steel
19	Nut	Carbon Steel	45	Nut	Carbon Steel
20	Adjust The Bolt	Carbon Steel	51	Compression Spring	Spring Steel
21	Hex Bolt	Carbon Steel	52	Spring Steel Pipe	Carbon Steel
22	Stud	Carbon Steel	53	Spring Seat	Carbon Steel
23	Nut	Carbon Steel	54	The Welding Of The Flange	Carbon Steel
24	Guide Bar	Carbon Steel (chrome Plating)	55	Spring Set	Carbon Steel
25	Supporting The Slider	Carbon Steel	56	The Nut Off	Carbon Steel
26	The Lubrication Of Bearings	Composite Materials	61	The Hydraulic Cylinder	Carbon Steel (chrome Plating)
31	Within The Cylinder End Cover	Nodular Cast Iron	62	Plunger	Carbon Steel (chrome Plating)
32	Outside The Cylinder End Cover	Nodular Cast Iron	63	Hydraulic Flange	Carbon Steel
33	Cylinder Block	Carbon Steel (chrome Plating)	64	Sealing Ring	Rubber
34	The Piston	Nodular Cast Iron	65	Guide Ring	Composite Materials
35	The Piston O-rings	Rubber	66	Hex Bolt	Carbon Steel
36	End Cover O-rings	Rubber			



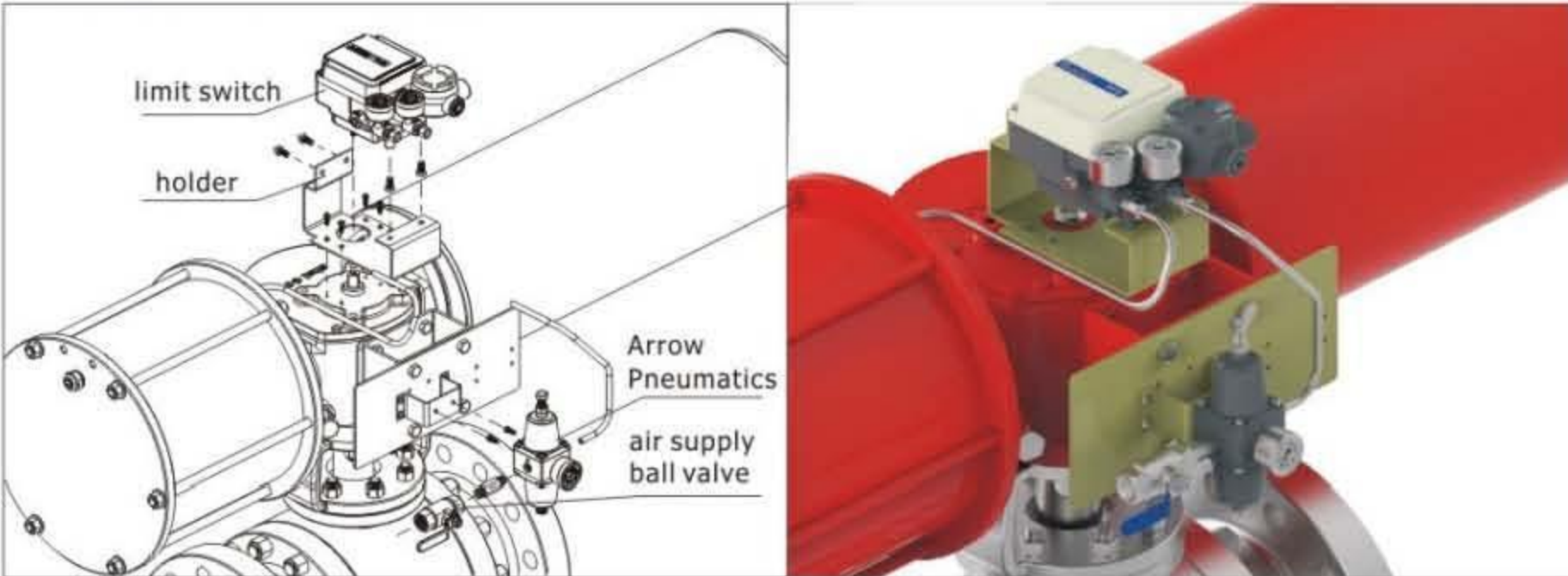
Control the attachment installation diagram

The following to install probably figure, such as accessories brand, model, different shape, etc., the installation drawing and this figure may be different, the user can design installation drawing.

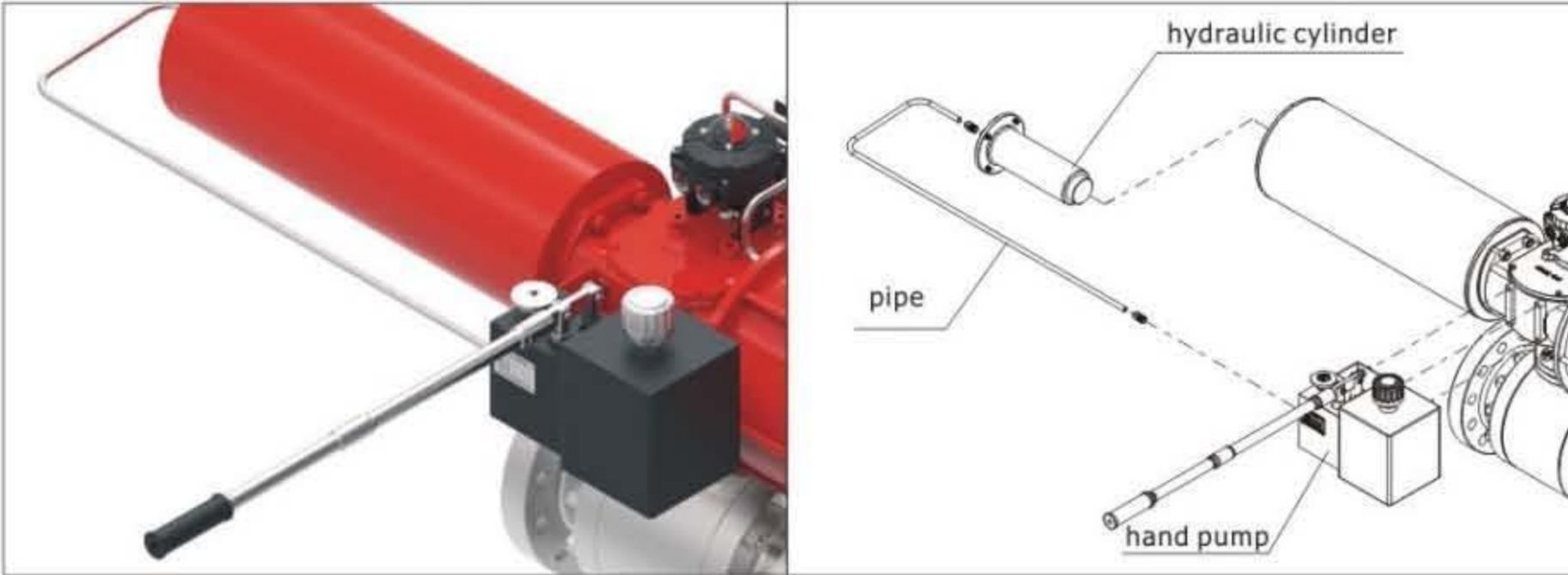
installation of solenoid valve and the limit switch



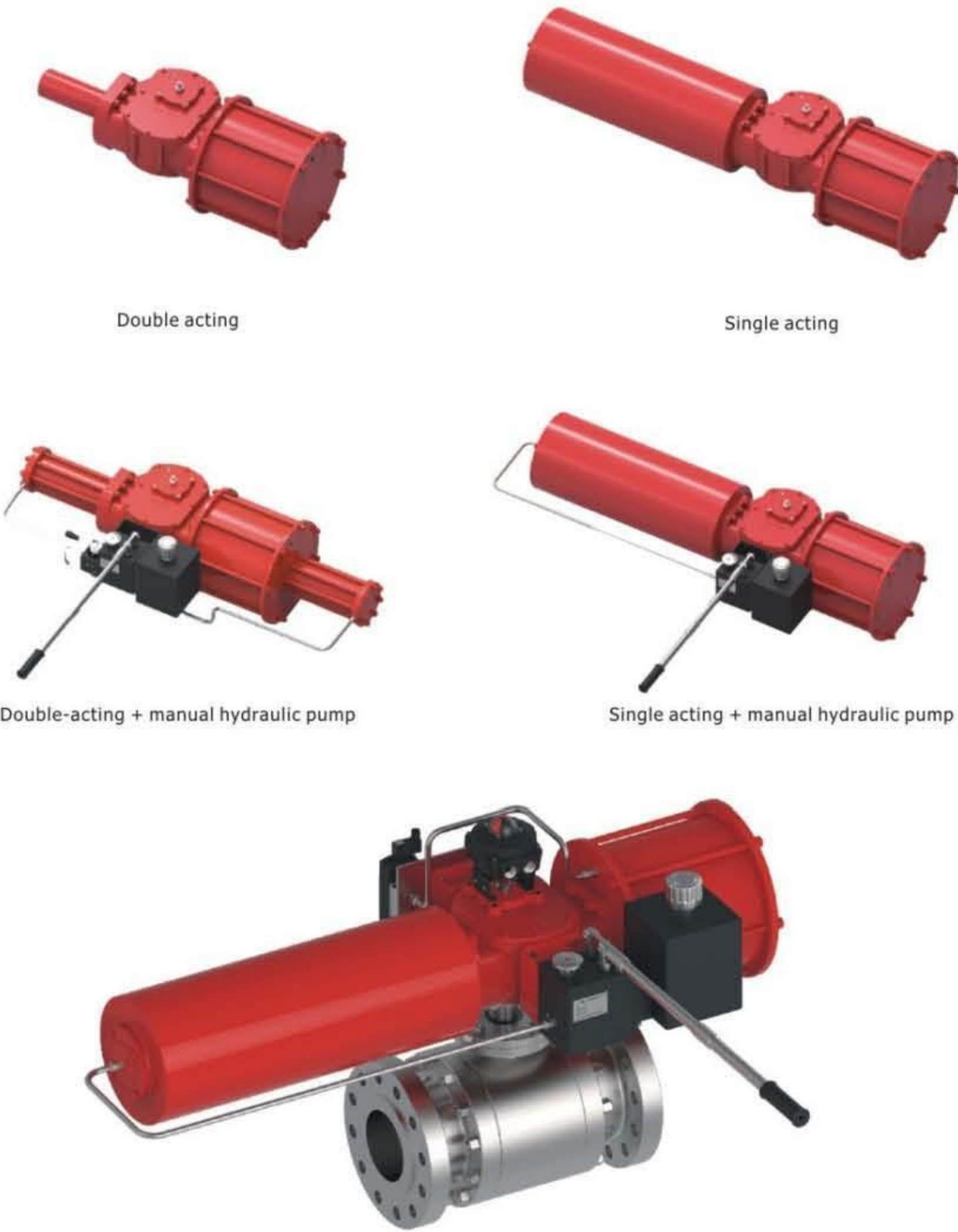
installation of the locator



installation of manual hydraulic pump



Basic figure BG series pneumatic actuators



**Double acting**

Model	Cylinder Capacity		Switching Time (s)		Maximum Working Pressure (bar)	Approximate Weight (kg)
	Inside	Outside	On (Inside)	Close (lateral)		
BTS-G0-180DA	3.2	3.3	2.0	2.0	0.8	42.0
BTS-G1-250DA	8.0	8.5	2.5	2.5	0.8	93.0
BTS-G2-300DA	13.5	15.0	3.0	3.0	0.8	134.0
BTS-G3-350DA	21.5	24.0	4.0	4.0	0.8	198.0
BTS-G4-400DA	34.0	38.5	5.0	5.0	0.8	322.0
BTS-G5-500DA	69.5	77.0	7.0	7.0	0.8	585.0
BTS-G7-600DA	123.5	129.0	8.0	8.0	0.8	915.0
BTS-G8-720DA	207.0	214.5	10.0	10.0	0.8	1372.0

Single acting

Model	Cylinder Capacity (l)		Switching Time (s)		Maximum Working Pressure (bar)	Approximate Weight (kg)
	Inside	Outside	On (Inside)	Close (spring Reset)		
BTS-G0-180SR	3.2	—	2.5	3.0	0.8	68.0
BTS-G1-250SR	8.0	—	3.0	3.5	0.8	164.0
BTS-G2-300SR	13.5	—	4.0	5.0	0.8	239.5
BTS-G3-350SR	21.5	—	5.0	6.0	0.8	362.0
BTS-G4-400SR	34.0	—	6.0	7.0	0.8	575.0
BTS-G5-500SR	69.5	—	9.0	10.0	0.8	1012.0
BTS-G7-600SR	123.5	—	10.0	12.0	0.8	1548.0
BTS-G8-720SR	207.0	—	12.0	14.0	0.8	2396.0

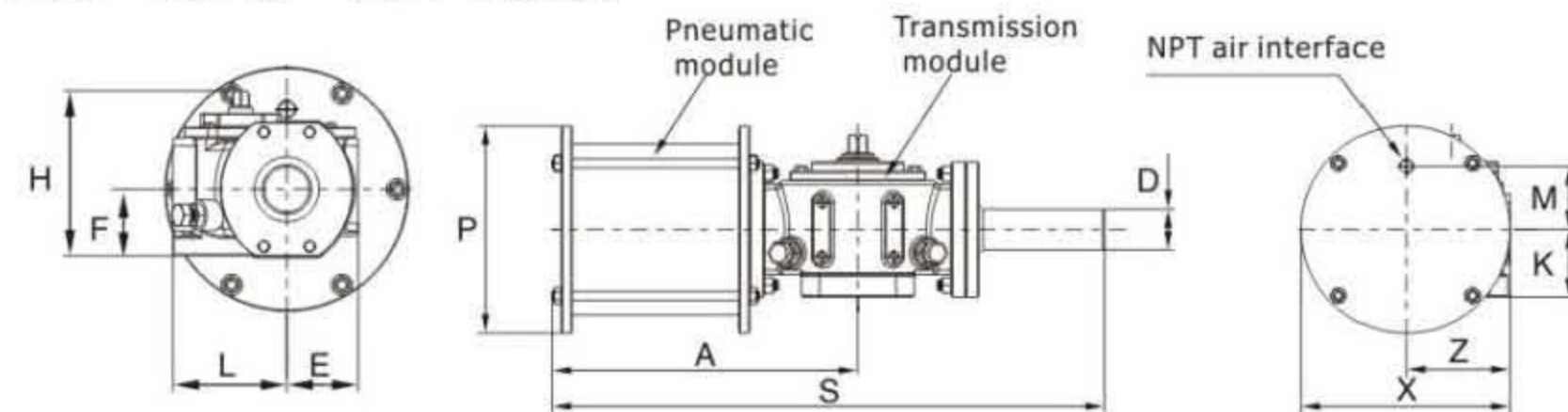
Note: 1, the type cylinder module in the table, the spring module is a standard configuration, if there is any change configuration data changes, consultancy, technology department.
 2, action time measured in the following conditions, (1) at room temperature, (2) the 90 ° Angle of trip (4) (3) clean neutral gas pipe 2-3 meters in length, (5) air Pressure is 5.0 bar, (6) actuator with no load. In the table
 3, the weight without any attachments.

**Double-acting output torque (Nm)**

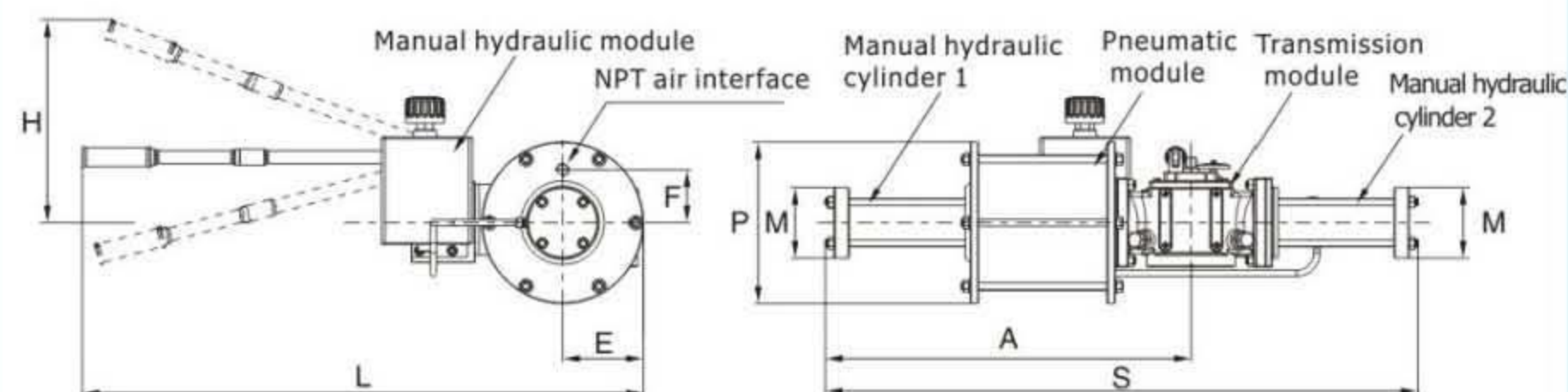
Model	Stroke Position	Air Pressure Output Torque (bar)								
		3.0	3.5	4.0	4.5	5.0	5.5	6.0	7.0	8.0
BTS-G0-180DA	Start/end	660	780	890	1000	1110	1220	1330	1550	1770
	Middle	360	420	480	540	600	660	720	840	960
	Least Value	360	420	480	540	600	660	720	840	960
BTS-G1-250DA	Start/end	1550	1810	2070	2330	2590	2850	3110	3630	4150
	Middle	840	980	1120	1260	1400	1540	1680	1960	2240
	Least Value	840	980	1120	1260	1400	1540	1680	1960	2240
BTS-G2-300DA	Start/end	2710	3160	3610	4070	4520	4970	5420	6320	7230
	Middle	1460	1710	1950	2200	2440	2680	2930	3420	3900
	Least Value	1460	1710	1950	2200	2440	2680	2930	3420	3900
BTS-G3-350DA	Start/end	4480	5230	5970	6720	7470	8220	8960	10460	11950
	Middle	2420	2820	3230	3630	4040	4440	4840	5650	6460
	Least Value	2420	2820	3230	3630	4040	4440	4840	5650	6460
BTS-G4-400DA	Start/end	7110	8300	9480	10670	11850	13040	14220	16600	18970
	Middle	3840	4480	5120	5760	6400	7050	7690	8970	10254
	Least Value	3840	4480	5120	5760	6400	7050	7690	8970	10254
BTS-G5-500DA	Start/end	14400	16810	19210	21610	24010	26410	28810	33620	38420
	Middle	7780	9080	10380	11680	12980	14280	15570	18170	20770
	Least Value	7780	9080	10380	11680	12980	14280	15570	18170	20770
BTS-G7-600DA	Start/end	25410	29650	33890	38120	42360	46600	50830	59310	67780
	Middle	13740	16030	18320	20610	22900	25190	27480	32060	36640
	Least Value	13740	16030	18320	20610	22900	25190	27480	32060	36640
BTS-G8-720DA	Start/end	43360	50590	57820	65050	72280	79510	86730	101190	115650
	Middle	23440	27350	31250	35160	39070	42970	46880	54700	62510
	Least Value	23440	27350	31250	35160	39070	42970	46880	54700	62510

Single-acting output torque (Nm)

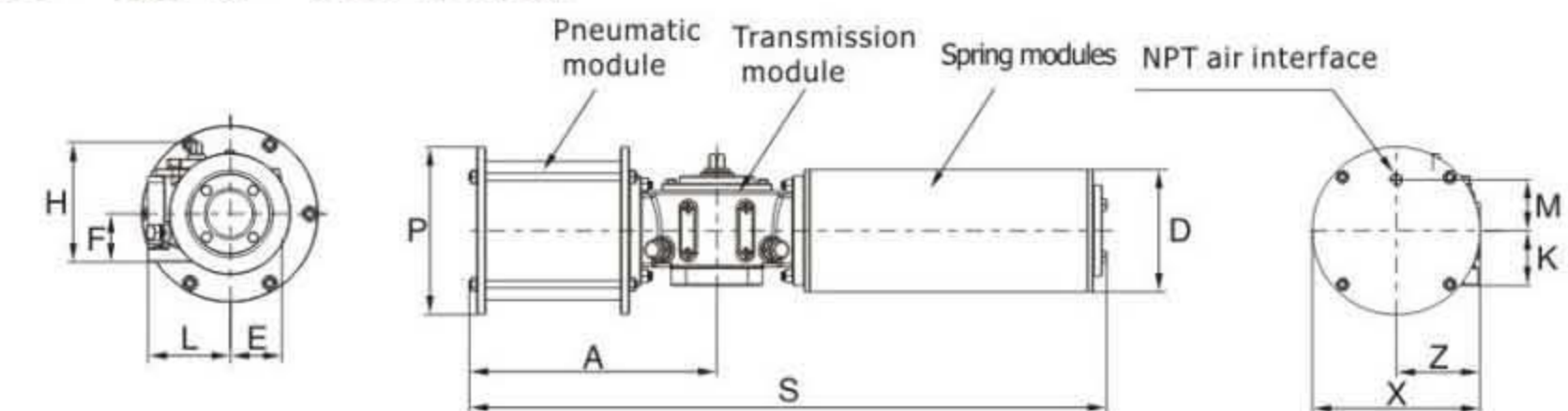
Model	Stroke Position	Spring Output Torque	Air Pressure Output Torque (bar)							
			3.0	3.5	4.0	4.5	5.0	5.5	6.0	7.0
BTS-G0-180SR	start	500	310	420	530	650	760	870	980	1200
	middle	220	120	180	240	300	360	420	480	600
	end	330	140	250	360	470	580	690	800	1030
BTS-G1-250SR	start	1160	710	960	1220	1480	1740	2000	2260	2780
	middle	530	284	420	560	700	840	980	1120	1400
	end	810	340	600	860	1120	1370	1639	1900	2410
BTS-G2-300SR	start	2040	1270	1720	2170	2620	3070	3530	3980	4880
	middle	920	490	740	980	1230	1470	1720	1960	2450
	end	1380	570	1020	1470	1920	2380	2830	3280	4190
BTS-G3-350SR	start	3510	2170	2920	3660	4410	5160	5910	6650	8150
	middle	1540	809	1210	1610	2020	2420	2820	3230	4040
	end	2210	820	1560	2310	3060	3800	4550	5300	6790
BTS-G4-400SR	start	5810	3730	4920	6110	7290	8480	9660	10850	13220
	middle	2440	1290	1930	2580	3220	3860	4500	5140	64220
	end	3240	1060	2250	3430	4620	5800	6990	8170	10550
BTS-G5-500SR	start	11690	7220	9630	12030	14430	16830	19230	21630	26440
	middle	5010	2560	3860	5162	6460	7750	9050	10350	12950
	end	6890	2260	4660	7070	9470	11870	14270	16670	21480
BTS-G7-600SR	start	20920	13320	17550	21790	26030	30260	34500	38740	47210
	middle	8790	4570	6860	9150	11440	13730	16020	18310	22890
	end	11610	3620	7850	12090	16320	20560	24800	29030	37510
BTS-G8-720SR	start	32210	22180	29410	36640	43870	51100	58330	65550	80010
	middle	14200	8640	12550	16460	20360	24270	28180	32090	39900
	end	20320	9800	17030	24260	31490	38720	45950	53170	67630

**BTS—G(0-8)—(180-720)DA**

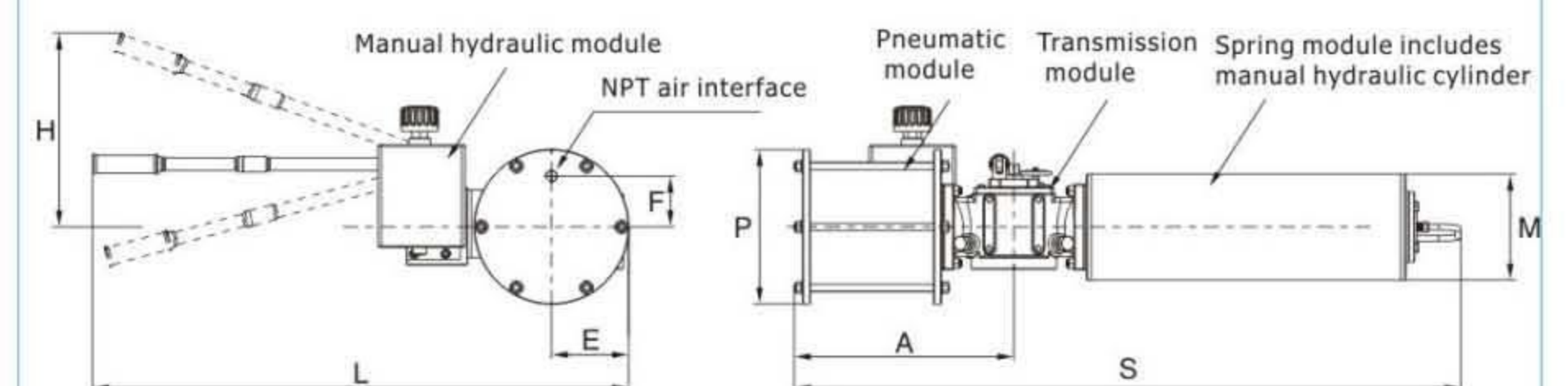
Model	H	L	E	F	P	A	S	D	X	Z	K	M	NPT
BTS-G0-180DA	180	115	75		230	345	618	45	230	115	75	70	2-1/4
BTS-G1-250DA	216.8	150	95	88	320	455	825	65	320			105	2-1/2
BTS-G2-300DA	228.4	165	116	92.2	370	515	910	70	370			130	2-1/2
BTS-G3-350DA	262	210	140	108.5	420	588	1060	100	448	238		155	2-1/2
BTS-G4-400DA	308.5	248	170	131	480	705	1265	100	523	283		175	2-3/4
BTS-G5-500DA	365.3	310	190	160.3	610	885	1205		655	350		220	2-3/4
BTS-G7-600DA	439.4	372	230	198.4	710	1065	1455		767	412		250	2-1"
BTS-G8-720DA	463	445	255	208	850	1190	1635		908	483		300	2-1-1/2

BTS - G (1-8) - (250-720 da) MH overall dimensions

Model	H	L	E	F	P	A	S	M	NPT
BTS-G1-250DA-MH	445	1225	160	105	320	725	1170	140	2-1/2
BTS-G2-300DA-MH	450	1260	185	130	370	830	1340	160	2-1/2
BTS-G3-350DA-MH	450	1335	240	155	420	925	1505	180	2-1/2
BTS-G4-400DA-MH	450	1410	283	175	480	1120	1810	210	2-3/4
BTS-G5-500DA-MH	465	1495	350	220	610	1395	2250	235	2-3/4
BTS-G7-600DA-MH	480	1600	412	250	710	1670	2705	260	2-1"
BTS-G8-720DA-MH	480	1710	483.2	300	850	1905	3115	310	2-1-1/2

**BTS—G(0-8)—(180-720)SR**

Model	H	L	E	F	P	A	S	D	X	Z	K	M	NPT
BTS-G0-180SR	180	115	75		230	345	875	168	230	115	75	70	2-1/4
BTS-G1-250SR	216.8	150	95	88	320	455	1290	219	320			105	2-1/2
BTS-G2-300SR	228.4	165	116	92.2	370	515	1460	274	370			130	2-1/2
BTS-G3-350SR	262	210	140	108.5	420	588	1660	326	448	238		155	2-1/2
BTS-G4-400SR	308.5	248	170	131	480	705	1915	402	523	283		175	2-3/4
BTS-G5-500SR	365.3	310	190	160.3	610	885	2270	480	655	350		220	2-3/4
BTS-G7-600SR	439.4	372	230	198.4	710	1065	2660	530	755	412		250	2-1"
BTS-G8-720SR	463	445	255	208	850	1190	3445	560	908	483		300	2-1-1/2

BTS—G(0-8)—(180-720SR)MH overall dimensions

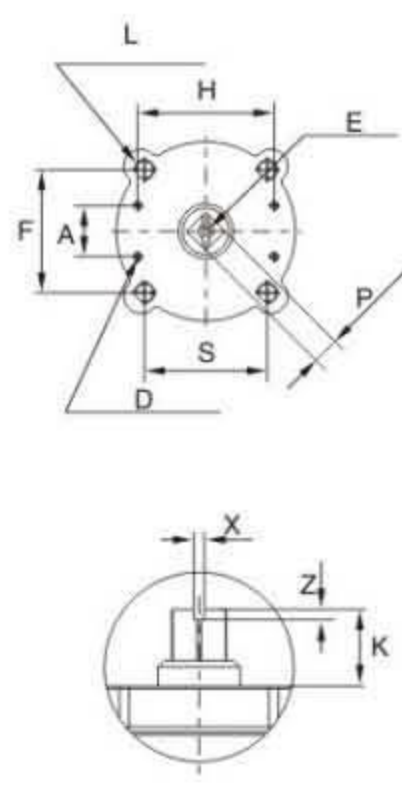
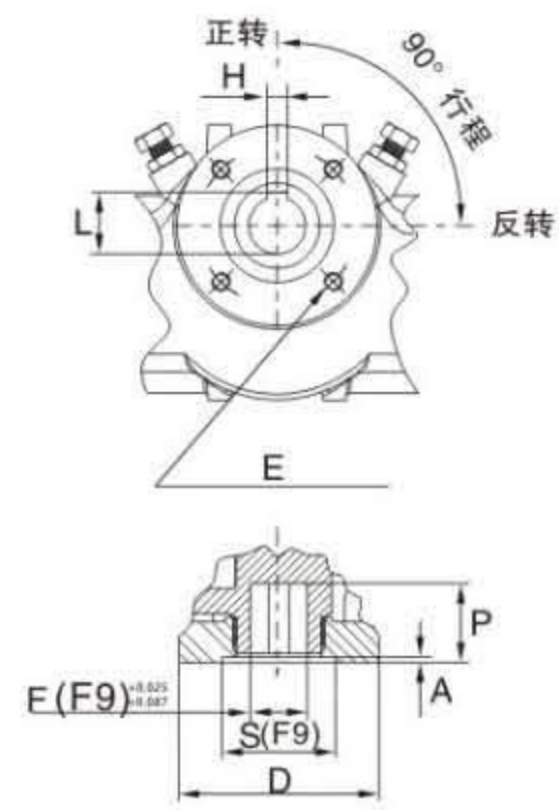
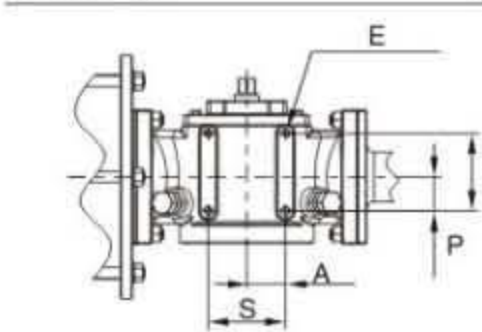
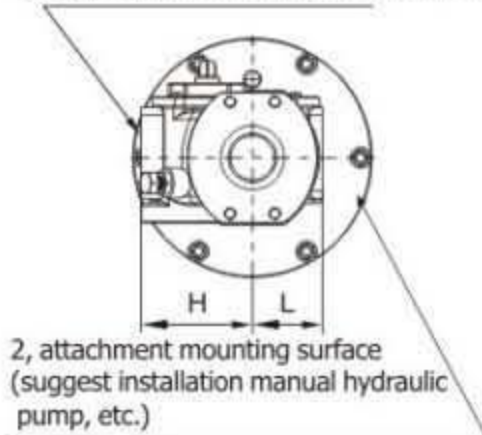
Model	H	L	E	F	P	A	S	M	NPT
BTS-G0-180SR-MH	435	1160	115	70	230	345	960	168	2-1/4
BTS-G1-250SR-MH	445	1225	160	105	320	455	1380	219	2-1/2
BTS-G2-300SR-MH	450	1260	185	130	370	515	1555	274	2-1/2
BTS-G3-350SR-MH	450	1335	240	155	420	588	1735	326	2-1/2
BTS-G4-400SR-MH	450	1410	283	175	480	705	2020	402	2-3/4
BTS-G5-500SR-MH	465	1495	350	220	610	885	2395	480	2-3/4
BTS-G7-600SR-MH	480	1600	412	250	710	1670	2790	530	2-1"
BTS-G8-720SR-MH	480	1710	483.2	300	850	1190	3565	560	2-1-1/2

**BTS-G(0-8)-(1800-720)DA Connection size****Install the connection diagram**

At the bottom of the valve connection size

At the top of the connection size

Lateral connection size

1, attachment mounting surface
(suggest install solenoid valve, filter, etc.)**At the bottom of the valve connection size**

Model	H	L	E	F	P	A	S	D
BTS-G0-180DA	10	39.3	4-M10深15×Φ102	36	60	5		85
BTS-G1-250DA	14	53.8	4-M16深24×Φ140	50	70	5	100	176.3
BTS-G2-300DA	18	64.4	4-M20深30×Φ165	60	90	5	130	205.5
BTS-G3-350DA	20	76.9	8-M16深24×Φ254	72	120	8	200	300
BTS-G4-400DA	28	104.4	8-M20深30×Φ298	98	150	8	230	350
BTS-G5-500DA	32	127.4	8-M30深45×Φ356	120	180	8	260	420
BTS-G7-600DA	40	169.4	8-M36深54×Φ406	160	200	10	300	480
BTS-G8-720DA	45	210.4	12-M36深54×Φ483	200	240	10	370	560

At the top of the connection size

Model	H	L	E	F	P	A	S	D	X	Z	K
BTS-G0-180DA	80		M6-深12	30	16SQ			4-M5-深10	4	4	30
BTS-G1-250DA	80	4-M12-深18	M6-深12	76.2	16SQ	30	76.2	4-M5-深10	4	4	30
BTS-G2-300DA	80	4-M12-深18	M6-深12	101.6	16SQ	30	101.6	4-M5-深10	4	4	30
BTS-G3-350DA	80	4-M12-深18	M6-深12	101.6	16SQ	30	101.6	4-M5-深10	4	4	30
BTS-G4-400DA	80	4-M12-深18	M6-深12	101.6	16SQ	30	101.6	4-M5-深10	4	4	30
BTS-G5-500DA	80	4-M12-深18	M6-深12	101.6	16SQ	30	101.6	4-M5-深10	4	4	30
BTS-G7-600DA	80	4-M12-深18	M6-深12	101.6	16SQ	30	101.6	4-M5-深10	4	4	30
BTS-G8-720DA	80	4-M12-深18	M6-深12	101.6	16SQ	30	101.6	4-M5-深10	4	4	30

Lateral connection size

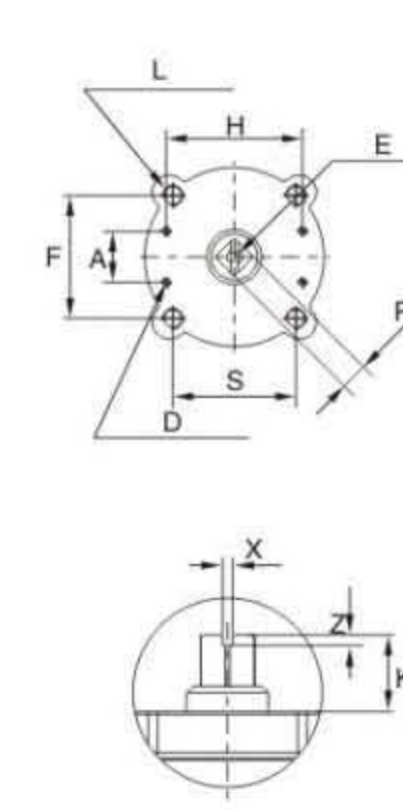
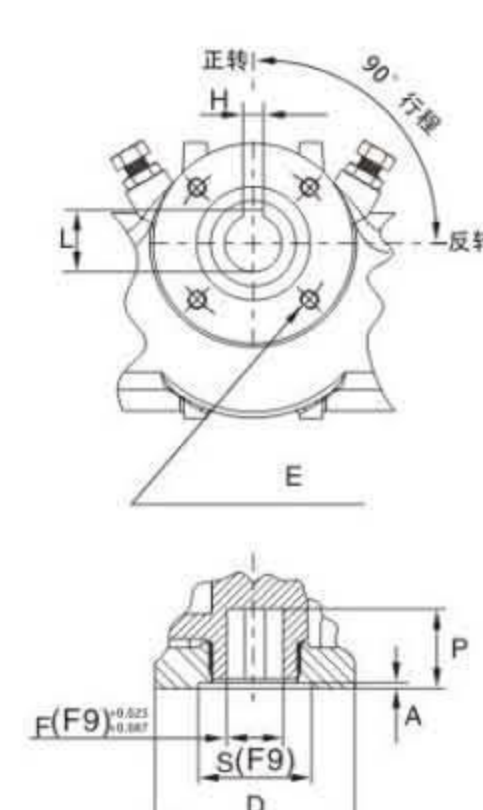
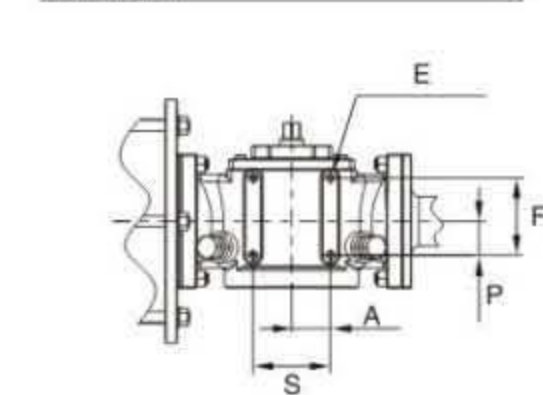
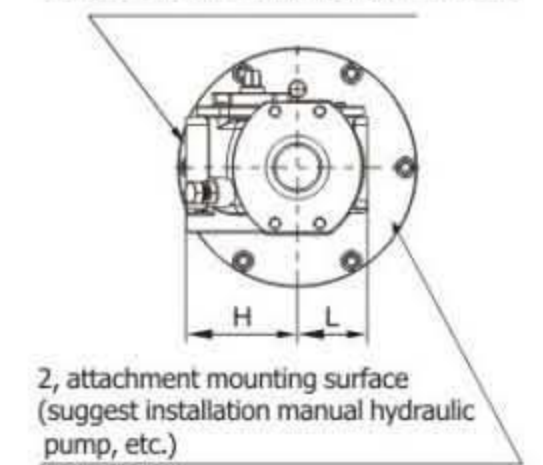
Model	H	L	E	F	P	A	S
BTS-G0-180DA	115	75	4-M12-深18	30	30	40	80
BTS-G1-250DA	150	95	4-M12-深18	101.6	44.5	50.8	101.6
BTS-G2-300DA	165	116	4-M12-深18	101.6	38.1	50.8	101.6
BTS-G3-350DA	210	140	4-M12-深18	101.6	28.7	50.8	101.6
BTS-G4-400DA	248	170	4-M12-深18	101.6	30.8	50.8	101.6
BTS-G5-500DA	310	190	4-M12-深18	101.6	16	50.8	101.6
BTS-G7-600DA	372	230	4-M12-深18	101.6	18	50.8	101.6
BTS-G8-720DA	445	255	4-M12-深18	101.6	16	50.8	101.6

**BTS-G(0-8)-(180-720) -SR Connection size****Install the connection diagram**

At the bottom of the valve connection size

At the top of the connection size

Lateral connection size

1, attachment mounting surface
(suggest install solenoid valve, filter, etc.)**At the bottom of the valve connection size**

Model	H	L	E	F	P	A	S	D
BTS-G0-180SR	10	39.3	4-M12-深18×Φ125	36	60	5		85
BTS-G1-250SR	14	53.8	4-M16-深24×Φ140	50	70	5	100	176.3
BTS-G2-300SR	18	64.4	4-M20-深30×Φ165	60	90	5	130	205.5
BTS-G3-350SR	20	76.9	8-M16-深24×Φ254	72	120	8	200	300
BTS-G4-400SR	28	104.4	8-M20-深30×Φ298	98	150	8	230	350
BTS-G5-500SR	32	127.4	8-M30-深45×Φ356	120	180	8	260	420
BTS-G7-600SR	40	169.4	8-M36-深54×Φ406	160	200	10	300	480
BTS-G8-720SR	45	210.4	12-M36-深54×Φ483	200	240	10	370	560

At the top of the connection size

Model	H	L	E	F	P	A	S	D	X	Z	K
BTS-G0-180SR	80		M6-深12	30	16SQ			4-M5-深10	4	4	30
BTS-G1-250SR	80	4-M12-深18	M6-深12	76.2	16SQ	30	76.2	4-M5-深10	4	4	30
BTS-G2-300SR	80	4-M12-深18	M6-深12	101.6	16SQ	30	101.6	4-M5-深10	4	4	30
BTS-G3-350SR	80	4-M12-深18	M6-深12	101.6	16SQ	30	101.6	4-M5-深10	4	4	30
BTS-G4-400SR	80	4-M12-深18	M6-深12	101.6	16SQ	30	101.6	4-M5-深10	4	4	30
BTS-G5-500SR	80	4-M12-深18	M6-深12	101.6	16SQ	30	101.6	4-M5-深10	4	4	30
BTS-G7-600SR	80	4-M12-深18	M6-深12	101.6	16SQ	30	101.6	4-M5-深10	4	4	30
BTS-G8-720SR	80	4-M12-深18	M6-深12	101.6	16SQ	30	101.6	4-M5-深10	4	4	30

Lateral connection size

Model	H	L	E	F	P	A	S
BTS-G0-180SR	115	75	4-M12-深18	30	30	40	80
BTS-G1-250SR	150	95	4-M12-深18	101.6	44.5	50.8	101.6
BTS-G2-300SR	165	116	4-M12-深18	101.6	38.1	50.8	101.6
BTS-G3-350SR	210	140	4-M12-深18	101.6	28.7	50.8	101.6
BTS-G4-400SR	248	170	4-M12-深18	101.6	30.8	50.8	101.6
BTS-G5-500SR	310	190	4-M12-深18	101.6	16	50.8	101.6
BTS-G7-600SR	372	230	4-M12-深18	101.6	16	50.8	101.6
BTS-G8-720SR	445	255	4-M12-深18	101.6	16	50.8	101.6